

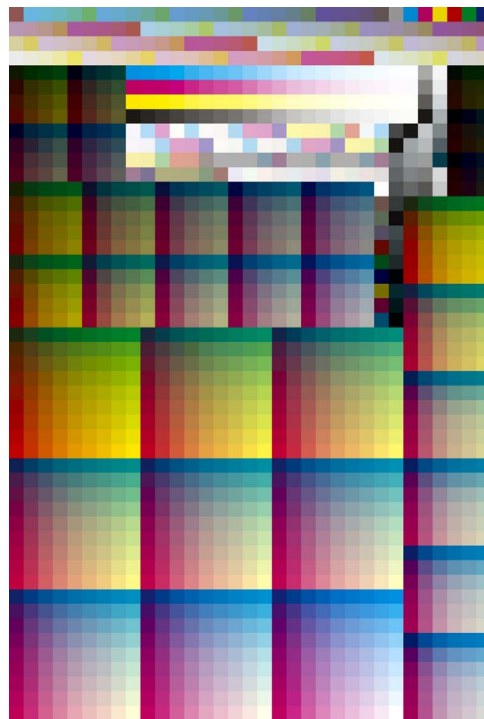
Introducing the TC1617

The TC1617 is a new CMYK characterization target combining the unique patch values in the standard IT8.7/4 target with all the patch values in columns 4 and 5 of the P2P51 target.

The TC1617 maintains the same patch count as the IT8.7/4 (1,617 – hence the name) by removing 29 duplicate patches from the IT8.7/4 and replacing them with the 29 patches in columns 4 and 5 of the P2P51 that were absent in the IT8.7/4.



TC1617



IT8.7/4 (visual)

Benefits for the G7 Master submission process

The primary purpose of the TC1617 is to reduce the time and cost of G7 Colorspace verification, by eliminating the need to print and measure two separate targets (IT8.7/4 and P2P51).

Effective immediately, print samples submitted for G7 Master Colorspace evaluation may include a single TC1617 target instead of separate IT8.7/4 and P2P targets.

Benefits for ICC profiling

An important side-benefit of the TC1617 compared to the IT8.7/4 is that it improves the characterization accuracy of a printing system, thanks to the addition of 29 new gray patches. Under certain circumstances this can produce more accurate ICC profiles and less chance of

Introducing the TC1617

unwanted color in neutral gray image areas, but the difference may be difficult to detect except on extremely stable printing systems.

Design

Unlike the IT8.7/4, the TC1617 is only available in randomized layouts (there is no “visual” version), however the CMY and K-only gray patches are not randomized, but rather arranged as two contiguous gray ramps along the edge of the target. This helps reduce small tonality or color variations throughout the gray ramps due to in-line ink starvation effects or uneven inking that would be magnified if the gray patches were randomized throughout the target.

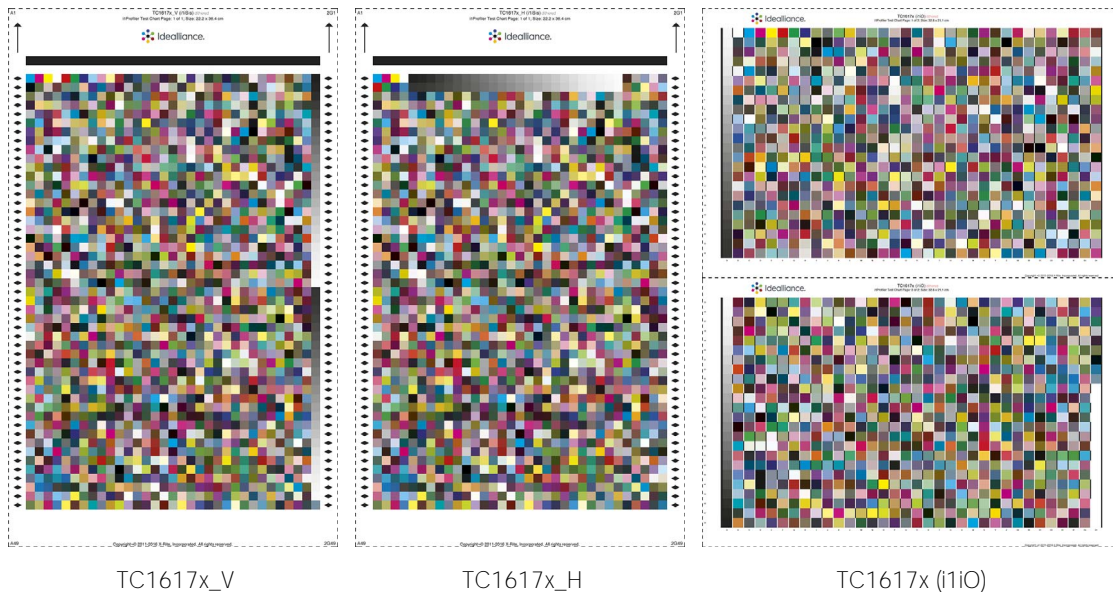
What does the letter “x” mean?

During development of the TC1617, several prototype versions were distributed for beta testing. To avoid confusion, the final official version has the letter “x” in the name, “TC1617x”. Other versions should be discarded as they may not work correctly and will not be accepted for G7 master submissions.

Standard TC1617 image files

Three versions of the TC1617x are available from the Idealliance website; two for the i1iSis and one for the i1iO. The two i1iSis targets are designed for either vertical or horizontal gray ramp alignment, and are marked accordingly with “V” or “H” in their names.

The i1iO target contains two pages in one image, with the gray scales in line with each other. Before measuring, cut the pages apart so the top of each page is closest to the i1iO armature.



Note: The letter “x” distinguishes the final TC1617x from earlier prototypes, which should be discarded.

Introducing the TC1617

Orientation on press

On printing systems subject to uneven inking or directional ink exhaustion, align the TC1617 so the gray ramps point in the direction of paper travel (e.g. around an offset press cylinder) or parallel to ink variation lines. This minimizes the chance of color anomalies within each gray ramp and can yield smoother curves and better G7 $w\Delta Ch$ and $w\Delta L^*$ scores.

16 bit target precision

The supplied 8 bit TIFF CMYK target images were produced using LSB error diffusion, giving each patch effectively 16 bit precision when integrated by a spectrophotometer aperture. This extra precision can be important in very light gray patches between 0 and 20%.

User-created targets (from the supplied CGATS text files) may not have the same accuracy but should be adequate for most purposes.

CAUTION: Lossy (e.g. JPEG) compression or re-sizing will eliminate most of the extra precision contained in the supplied 8 bit dithered targets.

Instrument compatibility

The supplied TC1617 target images can be measured on the Konica Minolta FD9, X-Rite i1iSis or i1iSis XL (1 or 2) and the X-Rite i1iO (1 or 2).

Software compatibility

The TC1617 can be measured by any software that drives the above instruments and accepts X-Rite .pwx or .rwx workflow files, or standard CGATS .txt files. Before measuring, copy the supplied .pwx, .rwx or .txt files into a location where the software can easily find them.

Custom TC1617 target images can be created and measured on other software or devices using the supplied CGATS .txt files, but may not be so accurate (see *16 bit target precision*).

ICC profiles can be created from TC1617 data in baslCColor print, X-Rite i1Profiler, or any software that accepts (and uses all the patches of) customer-generated CMYK target designs.

Impact on Idealliance press forms

The IT8.7/4 has been replaced by the TC1617 in all press forms and G7 Master kits on the Idealliance website.

Impact on the P2P target

The TC1617 eliminates the need for a separate P2P51 target for G7 Master Colorspace submissions, but the P2P51 is still recommended for G7 Grayscale or G7 Targeted submissions, and is still required by certain G7 calibration or verification software.

Impact on present and future CRPC data sets

Present (and future) CRPC data sets that have been (and will be) issued by CGATS or ISO in standard IT8.7/4 format will also be distributed by Idealliance in the G7-friendly TC1617 format because of the following advantages;

Introducing the TC1617

- The TC1617 contains real data for 25 G7 CMY gray samples compared to only 3 real G7 CMY gray samples in the IT8.7/4
- The TC1617 contains real data for 25 G7 K-only samples compared to only 17 real G7 K-only samples in the IT8.7/4
- Due to the lack of 29 real G7 gray samples, IT8.7/4-based profiles may not be as accurate in G7 gray areas as TC1617-based profiles
- Prints based on TC1617 profiles may achieve better scores for $w\Delta Ch$ and $w\Delta L^*$
- TC1617-based prints may have better accuracy or stability in gray image areas
- Profiles made from IT8.7/4 and TC1617 datasets should be visually identical

Note that for practical purposes, each pair of data sets will be interchangeable, however the IT8 version will continue to be the only official “standard” data until further notice.

Comparing TC1617 data to legacy IT8.7/4 data

The 29 new gray patches added to TC1617 data sets will be synthesized to perfectly meet the G7 neutral gray definitions in ANSI CGATS TR015. Some legacy-data patches (e.g. white, gray or black) may also have to be adjusted slightly to align with the new G7-perfect patches, but these changes should be very small and invisible to the eye.